

# Technical data sheet

## Product features



### Hood type dishwasher double skin heat recovery system 50x50 - 400 V

Model	SAP Code	00011295
-------	----------	----------



- To the product for free: 1x RM Clean+ 12 kg (00012271) and 1x RM Rinse+ 10 kg (00012273)
- Display type: LCD multifunction display
- Number of programs: 13
- Number of skin: 2
- Door clear height [mm]: 465
- Rack size [mm]: 500 x 500
- Water consumption of the washing cycle [l/basket]: 2,2
- Washing cycle time [s/basket]: 60-90-180
- Detergent and rinse pump system: ProDose - accurate dosing with a peristaltic pump
- Wash pump type: two-way - DuoFlow
- Self-cleaning cycle: Yes
- Drain filter: Evolution3 - double filtration with electronically controlled partial discharge before the rinsing phase ensures 0% loss of clean water to waste

<b>SAP Code</b>	00011295	<b>Boiler power [kW]</b>	7.000
<b>Net Width [mm]</b>	836	<b>Basin volume [l]</b>	22
<b>Net Depth [mm]</b>	721	<b>Tank power [kW]</b>	2.500
<b>Net Height [mm]</b>	2265	<b>Water consumption of the washing cycle [l/basket]</b>	2,2
<b>Net Weight [kg]</b>	111.00	<b>Washing cycle time [s/basket]</b>	60-90-180
<b>Power electric [kW]</b>	10.200	<b>Door clear height [mm]</b>	465
<b>Loading</b>	400 V / 3N - 50 Hz	<b>Rack size [mm]</b>	500 x 500
<b>Boiler capacity [ l ]</b>	12.00		

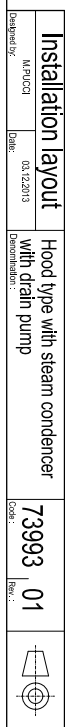
# Technical drawing



## Model

### SAP Code

00011295



# Technical data sheet

## Product benefits



### Hood type dishwasher double skin heat recovery system 50x50 - 400 V

Model

SAP Code

00011295

1

#### **Stainless steel outer shell construction**

round construction with stainless steel, rounded edges, Deep-drawn bathtub

- easy cleaning, high hygiene standard, long service life

2

#### **Washing arms with a component, common for washing and rinsing**

upper and lower composite swivel arms common for washing and rinsing with clickclack system for easy removal

- easy and safe handling during cleaning
- increased user comfort

3

#### **LED Display**

proScreen 4 local display + 2 LED strips

- easy control of the dishwasher operation
- continuous information on the status of the wash cycle
- diagnostics in the event of a fault

4

#### **Double pump**

unique two-way DuoFlow pump

- distributes the water pressure evenly between the upper and lower arms; no noise; allows the use of a weaker pump

5

#### **Molded basket supports**

guide rails for the baskets molded from the body of the dishwasher

- high hygiene standard
- longer service life

6

#### **Detergent dispensers**

two detergent and rinse aid dispensers

- precise chemical dosing by ProDose - precise dosing system for detergent and rinse aid by peristaltic pump setting of values via control panel

7

#### **Double filter system**

the chamber filter and the waste filter together with the ArchiMedes system provide a discharge system with increased water purification efficiency

- higher washing efficiency; longer life of the washing bath

8

#### **Energy saving**

energy saving energy saving system due to lowering the temperature of the boiler

- cost saving

9

#### **Protection of fragile dishes**

softstart system for gradual start of washing programs to protect fragile dishes

- protects stemmed glasses and other fragile utensils

10

#### **Double shell construction**

stainless steel construction with insulated double jacket

- quiet operation
- energy saving

11

#### **Fast heating**

performance management allows the current running of the boiler and basins body

- quick first warm-up of the dishwasher
- smooth operation

12

#### **Possibility of recovery**

saving up to 40% of boiler energy improves the comfort environment of the workplace environment without steam saves water

- saving on energy and water costs; environmentally friendly system; safe system; pleasant workplace

# Technical data sheet

## Technical parameters



### Hood type dishwasher double skin heat recovery system 50x50 - 400 V

Model	SAP Code	00011295
-------	----------	----------

**1. SAP Code:**

00011295

**2. Net Width [mm]:**

836

**3. Net Depth [mm]:**

721

**4. Net Height [mm]:**

2265

**5. Net Weight [kg]:**

111.00

**6. Gross Width [mm]:**

771

**7. Gross depth [mm]:**

886

**8. Gross Height [mm]:**

2314

**9. Gross Weight [kg]:**

121.00

**10. Device type:**

Electric unit

**11. Control type:**

Digital

**12. Material:**

Stainless steel

**13. Power electric [kW]:**

10.200

**14. Loading:**

400 V / 3N - 50 Hz

**15. Number of programs:**

13

**16. Opening of device:**

Flip up

**17. Door clear height [mm]:**

465

**18. Inlet pressure [bar]:**

2-4

**19. Adjustable feet:**

Yes

**20. Number of skin:**

2

**21. Self-cleaning cycle:**

Yes

**22. Boiler capacity [ l ]:**

12.00

**23. Boiler power [kW]:**

7.000

**24. Basin volume [l]:**

22

**25. Tank power [kW]:**

2.500

**26. Number of arms for both rinsing and washing:**

2

**27. Arm connection:**

Hand loosen/tighten screw

**28. Washing arm type:**

Rotatable two-pronged

# Technical data sheet

## Technical parameters



### Hood type dishwasher double skin heat recovery system 50x50 - 400 V

**Model**

**SAP Code**

00011295

**29. Washing arm material:**

Stainless steel

**30. Atmospheric boiler with rinse pump:**

Yes

**31. Rinsing arm type:**

Rotating two-pronged

**32. Rinsing arm material:**

Stainless steel

**33. Deep drawn tank:**

Yes

**34. Rack support:**

Pressed

**35. Tank surface strainers:**

stainless steel

**36. Drain filter:**

Evolution3 - double filtration with electronically controlled partial discharge before the rinsing phase ensures 0% loss of clean water to waste

**37. Thermostop:**

Yes

**38. Boiler thermostat adjust:**

Yes

**39. Rack feed capacity:**

60-40-20

**40. Detergent and rinse pump system:**

ProDose - accurate dosing with a peristaltic pump

**41. Energy Saving system:**

EnergySaving - Energy saving system due to lowering the boiler temperature

**42. Rinse system:**

UltraRinse2 - stainless steel rinsing arms including stainless steel nozzles with a geometry for spraying water in thin jets directly against the dishes, the rinsing pump ensures constant pressure

**43. Heating system:**

HotWash - System of simultaneous operation of the heating element of the bath and the boiler, reducing the time for starting the next cycle

**44. Quick heating system:**

QuickReady - System for rapid heating of water in the tank

**45. Lift system:**

ProGlide - Required lifting force equals 3 kg thanks to counterweights and gentle guidance, reduces operator fatigue

**46. Heat recovery:**

1 copper-aluminum battery - saving up to 40% of the energy needed to heat the water in the boiler, at the same time, by absorbing the released steam, it eliminates the need to use a hood

**47. Hot water electric valve:**

Yes

**48. Closing door system:**

ProSoft - Reduces noise, dampens the door stop, which could cause damage to dishes

# Technical data sheet

## Technical parameters



### Hood type dishwasher double skin heat recovery system 50x50 - 400 V

Model	SAP Code	00011295
-------	----------	----------

**49. Rack size [mm]:**

500 x 500

**50. Display type:**

LCD multifunction display

**51. Location of control panel:**

On the top

**52. USB port:**

Yes, for Firmware actualisation

**53. Drain pump:**

Yes

**54. Self-diagnostics:**

Yes

**55. Wash pump type:**

two-way - DuoFlow

**56. Detergent dispenser:**

Yes

**57. Rinse aid dispenser:**

Yes

**58. Water consumption of the washing cycle [l/basket]:**

2,2

**59. Washing cycle time [s/basket]:**

60-90-180

**60. Rinse water temperature [°C]:**

80

**61. Standard equipment for device:**

1x glass basket, 1x plate basket, 1x cutlery basket

**62. Program ProSpeed:**

Yes

**63. Program ProFessional:**

Yes

**64. Program ProTemp:**

Yes

**65. Program ProClean:**

Yes

**66. Program ProDrain:**

Yes

**67. Program ProEco:**

Yes

**68. Program ProNew:**

Yes

**69. Program ProLong:**

Yes

**70. Program ProGlass:**

Yes

**71. Program ProWater:**

Yes

**72. Program ProActive:**

Yes

**73. Program ProSteel:**

Yes

**74. Program ProSan:**

Yes

**75. Cross-section of conductors CU [mm²]:**

2,5

**76. Water supply connection:**

3/4"

# Technical data sheet

Technical parameters



Hood type dishwasher double skin heat recovery system 50x50 - 400 V

**Model**

**SAP Code**

00011295

## 77. Diameter nominal:

DN 50